



USB Projector

ADPP-105

User Manual

Brief Introduction

Thank you for purchasing the USB 2.0 LCOS Projector (ADPP-105) from Adapt-Mobile Ltd.

The product will add a secondary display to your existing Desktop or Notebook computer running Windows 2000/XP/Vista/07

The connected display can act as a mirrored or extended desktop of the main display on your PC.

- **Features**

- Color Filter LCOS inside
- Resolution 640X480
- 100c.c. Small in Size
- 80g Light in Weight
- Multi graphics display mode – Full screen, Region and Dual screen
- Plug-and-Play USB connectivity
- USB 2.0 compliant

- **System Requirements**

- Pentium 4 / Celeron Family, AMD K6 / Athlon / Duron Family. 1GHz or higher processor.
- 512MB RAM or higher(Higher memory recommended for optimal performance)
- Available USB 2.0 Port
- Windows 2000 SP4 / Windows XP SP2 / Windows Vista
-

- **Package Contents**

- v Specification
- LCOS USB Projector
- USB2.0 Particular Cable
- CD (User Menu and driver)
- Tripod

Device Installation on Windows

There is a built in UVTOOL driver which you will need to install only one time in order to use the USB Projector as a plug and play device, please follow these simple instructions.

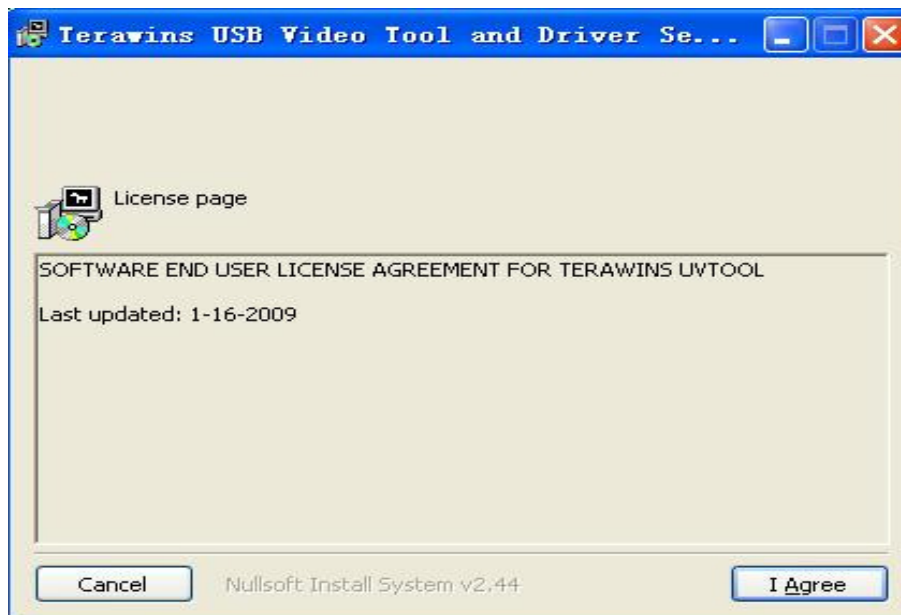
Install the UVTOOL

1. Plug the ADPP-105 into your computer using the USB cable supplied.
2. A folder from the ADPP-105 should automatically open with the UVTOOL driver installed. You need to install this driver onto your computer.

3. Double click on the file UVInstaller_v...:



and following window will pop-up:



4. Follow the on-screen Setup instructions. Make sure to click on “I Agree”, and the following dialog box will show:



Please click **confirm**.

5. After the installation is complete, there will be a dialog box as follows:



6. Finally, Click icon “Y”, and the computer would restart.

7. After restarting, the UVTOOL icon will show on the desktop. This means the software has successfully been installed on your computer




Operating the ADPP-105

Now that you have successfully installed the UVTOOL software, you can just follow these simple steps every time to use the ADPP-105 without anymore hassle.

1 . Click twice on the UVTool icon on the desktop.



2 . The UVTool window will pop up, then the icon  will show on the toolbar in the right hand corner of your screen.

3 . Connect the ADPP-105 projector to your computer using the USB cable, the Lcos projector will be the second display at that time.

4 . Setting the parameter in UVTool window, adjust the Focus Button to make the projection picture more effective.

UVTool Settings



UVTool v1.30-7(Beta) introduce

Capture: set the display range and selection of the player

Device: Player equipment

Preview: UVTool Preview in the computer

1. Capture setting

Full Screen: the computer's full screen on display.

Region: projecting same size as the player.

Movie play region:

Select **Pan Region**, a window appears.

Move the mouse to the region that you want.

Dual screen: only show the background

Region a window appears. Click

the edge tightly by picture of the computer

Video Player: enter into **Vplayer**; Confirm **Browse**, enter to the selected document.

remarks: this function only supports the production with Video player.



2.Device UV Tool Windows

Video Quality

Presentation: brief quality

Movie: movie quality

Low data: low quality

Options:

Languages:

English, Chinese(CHS,CHT),Japanese

Direct3D Software only: Direct3D software

DirectDraw Emulation: DirectDraw simulation



3. Preview Window

Floating: float show the window,

Dock: show the window as dock style

Hide: hide the window

Preview: view the changes you've made



Important Note:

The ADPP-105 can only support Autorun of internal driver from USB 2.0 port. For users with only USB 1.1 then you will need to use the CD (included) to install the driver.

Troubleshooting Skill

The following trouble shooting guide may help if you are experiencing any difficulties using the device. Contact your dealer for additional assistance if needed.

- Check to make sure that all connectors are plugged in correctly.
- Make sure the USB port is USB 2.0.
- Try a different USB 2.0 port or another computer.
- Check the power led indicator is ON.
- Try connecting the adapter directly instead of through the hub.
- Unplug all other USB devices from the system.
- Make sure to restart your computer after the driver installation.
- Unplug the device and re-insert it.

If you have problems during restart process, start your computer in Safe Mode and move the driver. Press the CTRL key until the Windows start menu appears and select Safe Mode.

Disclaimer

Information in this document is subject to change without notice. The manufacturer does not make any representations or warranties (implied or otherwise) regarding accuracy and completeness of this document and shall in no event to be liable for any lose of profit or any commercial

damage, including but not limited to special, incidental, consequential, or other damage. No part of this document may be reproduced or transmitted in any form by any means, electronic or mechanical, including photocopying, recording or information recording and retrieval systems without the express written permission of the manufacturer.

If you are still having difficulty
operation the Adapt ADPP-105 then
please email support:
Productsupport@adapt-mobile.com
we are here to help.